

Providing easy-to-implement, cost-effective
and reliable high-speed printing solutions



IBM Infoprint 2060ES and Infoprint 2075ES



Infoprint 2060ES

Infoprint 2075ES

Highlights

- **Offers high-quality, high-function cutsheet printing with copying/scanning capabilities**
- **Offers multifunction capabilities including scan to email/server/fax¹**
- **Provides a powerful IBM controller for optimal performance and flexibility**
- **Prints at speeds of up to 60 or 75 ppm² respectively with 1200 x 1200 dpi resolution**

Capitalizing on versatility for business success

To enhance productivity and enable operating efficiency, companies need flexible, integrated output solutions. These solutions must offer moderate print speeds, exceptional quality, a wide range of multifunctional capabilities and easy system integration—all at an attractive total cost of ownership.

The IBM Infoprint[®] 2060ES and Infoprint 2075ES are full-function, medium speed, enhanced printing systems that operate at speeds of up to 60 and 75 pages per minute (ppm)²

respectively, and that provide 1200 x 1200 dots-per-inch (dpi) resolution to produce high-quality images and graphics. Among the first to effectively combine a true data-center-centric controller with copying and scanning capabilities, both the Infoprint 2060ES and Infoprint 2075ES are easy-to-use solutions that can help you gain a competitive edge.

Improving productivity with high-speed printing

The Infoprint 2060ES and Infoprint 2075ES meet the need for moderate output speed, moderate duty cycles and flexible capabilities while helping you achieve low operating costs. Designed to meet IBM @server iSeries™ and IBM @server zSeries™ customer requirements, while remaining compatible with other systems, the Infoprint 2060ES and Infoprint 2075ES are high-function production printers that facilitate consolidation between information technology and repro-graphics production centers. They are also ideal for distributed environments where they can serve as consolidated printing, copying and scanning solutions.

The Infoprint 2060ES and Infoprint 2075ES are the only printers in their class and price range that have native IBM Intelligent Printer Data Stream™ (IPDS™) capabilities. IPDS is a printer-device datastream that controls printer functions and enables two-way communication between the printer and the printer driver. IPDS printing provides for a cooperative print management system that can help improve error recovery, speed and reliability. The Infoprint 2060ES and Infoprint 2075ES also support Portable Document Format (PDF), Adobe® PostScript® and Printer Control Language (PCL), Xerox datastreams (via transform), and automatic switching between datastreams.

To provide enhanced capabilities, the IBM Infoprint 2060ES and Infoprint 2075ES are equipped with an integrated scanner that supports digital network scanning at up to 60 and 75 impressions per minute (ipm)³ respectively. Powerful, yet easy to use, the capabilities of the integrated scanner can be integrated with network systems to enable scan to email, fax and server.

Enhancing operating efficiency and controlling costs

Designed as full-function, cost-effective multifunction solutions, the Infoprint 2060ES and Infoprint 2075ES can help increase productivity while reducing the total cost of printing. The combination of a base maintenance plan option with a cost-effective monthly fee and click charges⁴ that include toner presents attractive overall operating costs—making the Infoprint 2060ES and Infoprint 2075ES very affordable products.

Both printers can meet your volume and cost requirements by offering up to seven input trays that hold up to 8,900 sheets and an optional interposer tray—allowing you to intertwine different colored stock without paying for manual insertion. Output trays feature high-capacity stitcher/stacker capabilities with up to a 3,000-sheet capacity, and a top tray holds up to

500 sheets. Several finisher options are offered, including a booklet maker that supports stapling in numerous positions, and optional switchable hole-punch kits are available.

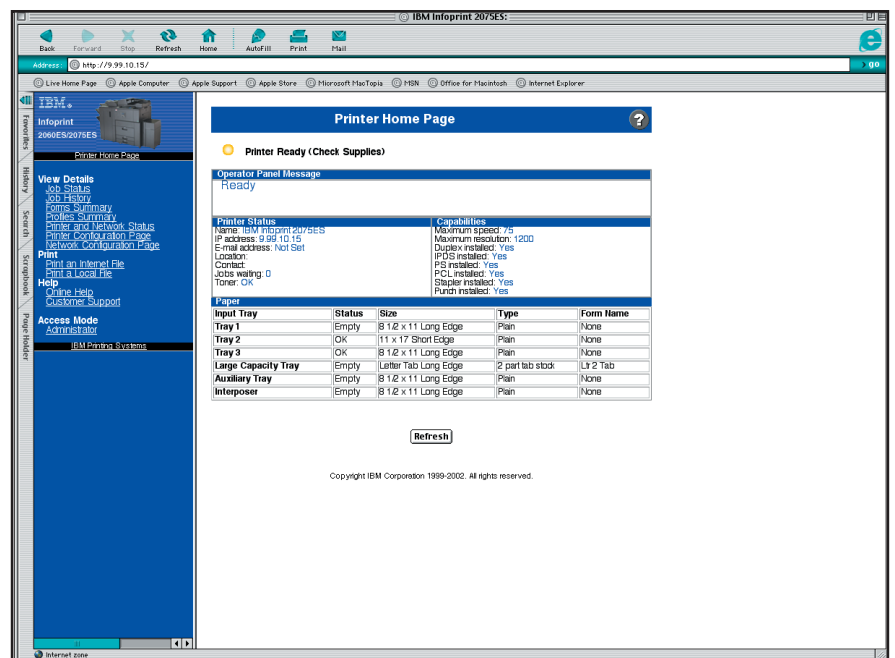
Maximizing flexibility and efficiency with robust features

The Infoprint 2060ES and Infoprint 2075ES support multiple connectivity options. In addition to a walk-up touch-screen, easy-to-use graphical user interface (GUI) and superior status notification, the IBM controller—in conjunction with other IBM software products and optional features—offers the following advanced functions:

Printer-resident Web pages—

Operators and administrators can view printer-resident Web pages through a browser using the printer Internet Protocol (IP) address. You can use Web-pull printing or direct printing to submit print jobs.

*Easily manage resources
and submit print jobs
through printer-resident
Web pages.*



e-mail printing and notification—A user can send e-mail with attachments (PostScript, PDF and PCL) to the printer, which can print directly from the e-mail. Web-pull printing and e-mail printing are valuable tools to remote sales users, who can have the printer automatically prepare customer collateral for pickup upon arrival at the office. The Infoprint 2060ES and Infoprint 2075ES can also send notification to cell phones via an IP address to ensure that the user or operator receives immediate status information.

Send and save—Any user can send jobs to be held for later release, archive to the document server and use personal identification numbers for added security.

IBM Network Printer Manager (NPM) for Microsoft® Windows®—IBM NPM has an easy-to-use GUI, allowing network administrators to quickly set up Notification Manager for the Infoprint 2060ES and Infoprint 2075ES. Whether printers are low on toner, out of paper or need other attention, these notifications can quickly get the right information to the right resources, helping to improve printer uptime and end-user productivity.

Scan to email, server and fax — Any user can scan documents to email or a server. With a simple press of the scanner button, the document can be sent by entering an email address or by choosing from an address book. The printer can send data as email, pdf or TIFF attachment.

Printers at a glance	IBM Infoprint 2060ES	IBM Infoprint 2075ES		
Hardware components				
Printer controller	800 MHz PowerPC 750FX processor; 1200 dpi; 40GB hard drive; 10/100/1000 BaseT Ethernet; 512 MB RAM; optional Token-Ring, up to 1.0 GB optional memory; optional wireless			
Copier controller	1x40GB hard drives 128 MB RAM	1x40GB hard drives 128MB RAM		
Print speed (up to)²	60 ppm (letter/A4)	75 ppm (letter/A4)		
Copy speed (up to)³	60 ipm (letter/A4)	75ipm (letter/A4)		
Max. usage⁵ (letter/A4)	Up to 300,000 imp./month	Up to 300,000 imp./month		
Paper handling				
Standard input capacity	Three drawers (4 for Japan), one tandem 3, 100-sheet drawer; two 550-sheet drawers			
Optional input capacity	4,000-sheet high capacity tray; 100-sheet auxiliary, 200-sheet interposer tray			
Output capacity (must choose one)	3,500-sheet finisher with up to 100-sheet stapler; 3,250-sheet finisher with up to 50-sheet stapler; 3,750-sheet booklet maker with up to 50-sheet stapler, 500-sheet output bin			
Media sizes	5.5" x 5.5"; 5.5" x 8.5"; 7.25" x 10.5"; 8" x 10"; 10" x 15"; 11" x 14"; 12" x 18"; 8.5" x 13"; 10" x 14"; 10"x15"; 8.5" x 11"; 8.5" x 14"; 8" x 10.5"; 8.25" x 13"; 8.25" x 14"; 11" x 17"; 11" x 15"; 148 x 210 mm; 210 x 297 mm ; 297 x 420 mm; 257 x 264 mm; 182 x 257 mm ; 170 x 210 mm; 182 x 210 mm; 210 x 340 mm; custom (feeds out of drawers 2 and 3, no hole punch or staple, runs at half speed)			
Media types/weights⁶	16 lb bond to 110 lb index (52g/m ² to 216 g/m ²); xerographic bond; rag bond; ledger grain long; dual-purpose; cover stock; short/long grain stocks; labels; transparencies			
Environmental conditions				
Permitted ranges: temperature	IBM Infoprint 2060ES 50 to 90 deg. F (10 to 32 deg. C)	IBM Infoprint 2075ES 50 to 90 deg. F (10 to 32 deg. C)		
Humidity	15% to 80% RH	15% to 80% RH		
Acoustics	74dbA (operating); 48 dbA (idle)	80 dbA (operating); 48 dbA (idle)		
Communication protocols				
	TCP/IP; IPX/SPX; Ethertalk/Tokentalk; NetBIOS/NetBEUI; IPP			
Print language support				
	Optional—PCL5e, PCL6, PS 3, PDF, IPDS, LCDS/Metacode (via transform)			
Software support				
	PSF for OS/390®; PSF/400; PSF/VSE; PSF/VM; Infoprint Manager for Windows NT® and Windows 2000; Infoprint Manager for AIX®; Network Port Monitor; Network Printer Manager			
Print drivers				
	Windows 2000/XP/NET/ME 32 bit PostScript 3™/PCL 6 drivers; Mac OS X/classic/Native PS/PCL drivers; AIX 4.3x - 5.2/5L 32 bit PS/PCL drivers; Sun Solaris 7/8/9 Sparc drivers; SCO UNIX® Openserver 5 PS/ PCL driver; HP-UX 11.00/11.20 PS/PCL drivers; Linux PostScript 3 drivers			
Physical characteristics				
Base printer	Width 27.2" (690 mm)	Depth 29.5" (750 mm)	Height 45.9" (1,165 mm)	Weight 447 lbs (203 kg)
Max. configuration	68.4" (1,738 mm)	29.5" (750 mm)	45.9" (1,165 mm)	1,003 lbs (456 kg)
Power requirements				
North America	120V, 60Hz, 20 amps	120V, 60Hz, 20 amps		
EMEA	220-240V, 50/60Hz, 10 amps	220-240V, 50/60Hz, 10 amps		
Japan	100V, 50/60Hz, 15 amps	100V, 50/60Hz, 15 amps		

1 Requires additional accessories, sold separately

2 Exact speed varies depending on document complexity, system configuration, software application, driver and printer state.

3 Exact scan speed varies depending on the document attributes, system configuration and user select settings.

4 Not available in all countries.

5 IBM does not recommend reaching this monthly maximum on a consistent basis.

6 Hole-punching on tabs in printer mode may cause excessive jams if using heavy-stock paper above 90 lb./163 gsm index.

Network status page—To help determine the cause of printing problems, operators and administrators can use the network status screen of the Infoprint 2060ES and Infoprint 2075ES to view the realtime status of various printer-related network communications.

Downloadable job log—Users can capture valuable accounting information of jobs that are sent from their network.

Offering exceptional performance and value

The high-function IBM Infoprint 2060ES and Infoprint 2075ES provide exceptional performance and can effectively handle your moderate monthly duty cycles at moderate speeds—all at an attractive total

cost of ownership. The printing and copying functions allow for device consolidation and can help increase productivity. And the Infoprint 2060ES and Infoprint 2075ES are backed by unmatched IBM service—flexible maintenance options include customizable, comprehensive, global service and support.

Competitive financing options from IBM Global Financing
IBM Global Financing offers some of the industry's most competitive rates for a wide range of IBM products and services.

For more information

To learn more about the IBM Infoprint 2060ES and Infoprint 2075ES, call 1-800-IBM-4-YOU (426-4968) or visit:

IBM Printer Outlet.com
1-866-430-6202



© Copyright IBM Corporation 2003

IBM Printing Systems
Dept. HT7/001H
P.O. Box 1900
Boulder, CO 80301-9191
U.S.A.

Printed in the United States of America
10-03
All Rights Reserved

IBM, the IBM logo, the e(logo), the e-business logo, AIX, Infoprint, Intelligent Printer Data Stream, IPDS, OS/390, iSeries and zSeries are trademarks or registered trademarks of International Business Machines Corporation in the United States, other countries, or both.

Adobe and PostScript are either registered trademarks or trademarks of Adobe Systems Incorporated in the United States and/or other countries.

Microsoft, Windows and Windows NT are trademarks of Microsoft Corporation in the United States, other countries, or both.

UNIX is a registered trademark of The Open Group in the United States and other countries.

Other company, product and service names may be trademarks or service marks of others.

References in this publication to IBM products or services do not imply that IBM intends to make them available in all countries in which IBM operates.

IBM hardware products are manufactured from new parts, or new and used parts. In some cases, the hardware product may not be new and may have been previously installed. Regardless, our warranty terms apply.

ENERGY STAR is a U.S. registered mark. The ENERGY STAR Emblem does not represent EPA endorsement of any product or service.



Money Isn't All You're Saving

